

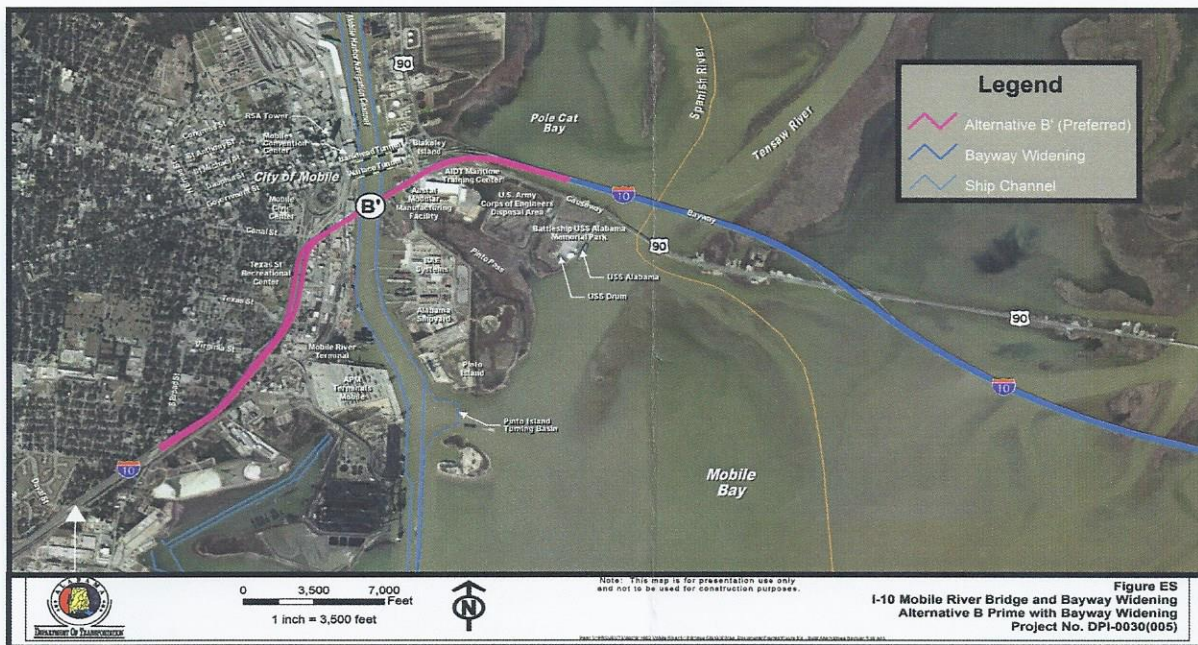
## Build the I-10 Bridge

Since the late 1990s, Mobile citizens and community leaders have advocated for a bridge over the Mobile River and widening the I-10 Bayway to alleviate traffic through the Wallace Tunnel on I-10.

In 2005, the Mobile Area Chamber of Commerce's Board of Directors sent a letter to the Alabama Department of Transportation (ALDOT) stating that a bridge was necessary and should not jeopardize maritime commerce. It should also have the ability to move the most people and product possible, have minimal environmental impact and be completed in a reasonable timeframe. In 2008, the Chamber's board unanimously passed a position statement in support of the project.

The Chamber has worked diligently with the maritime community, elected officials and local business and industry representatives to determine the best location with the least negative impact on the regional business community and environment.

In 2011, the Chamber formed the Build the Bridge Coalition to seek community support for a new bridge and widening of the I-10 Bayway from four to eight lanes. In July 2014, the Coastal Alabama Partnership joined with the Chamber to cultivate regional support for the project by reaching out to key constituents in Texas, Louisiana, Mississippi, northern Alabama and Florida.



## The Process

1. A Draft Environmental Impact Statement (DEIS) was released by the Federal Highway Administration for the I-10 Mobile River Bridge and Bayway widening project. Public hearings are scheduled for Sept. 23 and 29, in Mobile and Baldwin counties.
2. There are 12-13 locations among both counties where the DEIS can be reviewed. The document is also available on the Alabama Department of Transportation (ALDOT) website, [www.mobileriverbridge.com](http://www.mobileriverbridge.com).
3. Comments will be accepted online through ALDOT's website from Sept. 23 – Nov. 7, 2014.
4. Following the public comment phase, ALDOT has up to one year to begin the design and engineering phase. During this process a true estimate of the project's cost and scope of work will be completed. This could take up to two years. Construction could take four to six years.
5. Background on the bridge project and the DEIS can also be reviewed on the Build the Bridge Coalition website [www.buildthe10bridge.com](http://www.buildthe10bridge.com).

[www.buildthe10bridge.com](http://www.buildthe10bridge.com)